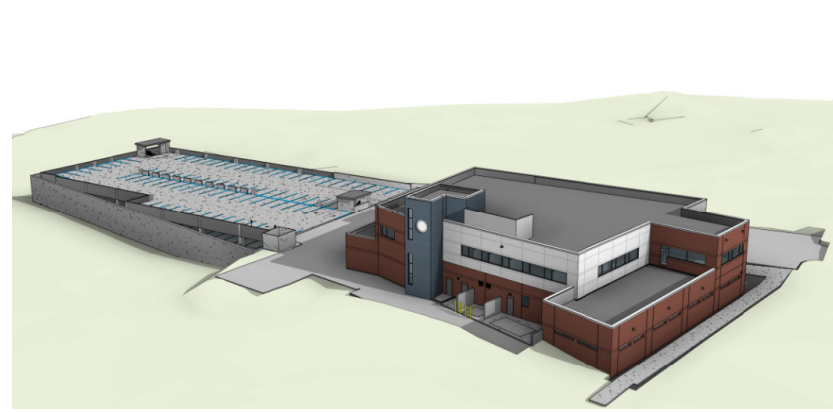
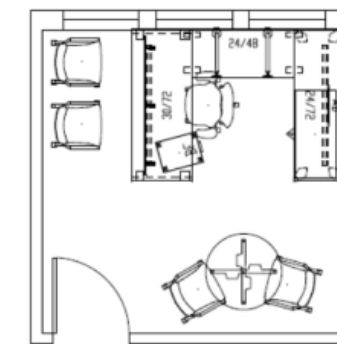


CITY OF ROCHESTER
POLICE DEPARTMENT

POLICE STATION PLANNING & FEASIBILITY



SPACE ANALYSIS FORM											
DEPARTMENT:	SPACE CODE	TOTAL PERSONNEL SPACES REQ'D				PROG. SF UNIT	USABLE AREA REQUIRED				COMMENTS
		Existing Utilization	Existing Need	Proposed Need	20-YR. Proposed		Existing Utilization	Existing Need	Projected Need	20-YR. Projected Need	
PATROL											
Personnel Spaces											
Sergeant - Shared Office	OF	6	6	8	8	95	163	570	760	750	190 sf shared office, 2 Spts. per office
Patrol Officers - Open Office	WS	14	15	24	30	24	230	360	576	720	6x8 workstation, 2 per Officers per workstation
Reserves	WS	11	11	11	11	-	-	-	-	-	Share patrol workstations
Subtotal, Personnel Spaces:		31	32	43	49		393	930	1,336	1,470	
Support Spaces											
Roll Call Room		-	1	1	1	500	-	500	500	500	14 person seating
Dictation/ Reports Room		-	2	2	2	60	-	120	120	120	Private room w/ counter space
Copy/ Work/ Mail		-	1	1	1	150	-	150	150	150	
Duty Bag Storage		-	1	1	1	200	-	200	200	200	30 units, locate near garage
Bodycam/ Tazer Charging		-	1	1	1	40	-	40	40	40	
Armory		1	1	1	1	120	235	120	120	120	
Gun Cleaning		1	1	1	1	144	140	144	144	144	Size for 2 officers
Subtotal, Support Spaces:		2	8	8	8		375	1,274	1,274	1,274	
Total Department Spaces:		33	40	51	57		768	2,204	2,610	2,754	
Total Net SF						768	2,204	2,610	2,754		
Net to Gross Factor						25%	289	772	954	964	
TOTAL DEPARTMENT GROSS SF							1,037	2,975	3,524	3,718	



- 36" x 72" table with modesty panel
- 24" x 48" bridge surface to the side
- 24" x 72" back surface with 2-drawer lateral file below. Closed overheads, tasklight, and tackboard above
- Mobile box/file pedestal with cushion top
- 36" diameter conference table
- Four guest chairs
- Mirra task chair

SITE FEASIBILITY MASTERPLAN

BKV Group performs site test-fits for one or multiple sites to determine the functionality of the design concept. Site constraints such as site access, zoning regulations, utility locations, topography and storm water requirements are reviewed and demonstrated graphically. Multiple concepts explore ideas for the building massing, facility functionality and adjacencies, vehicle and pedestrian circulation, wayfinding, staff and public parking, and site security. The final master plan is developed after ranking the evaluation criteria and preferences are included.

SPACE NEEDS ANALYSIS

BKV Group can determine your future space needs by analyzing demographic forecasts and applying our knowledge of national standards and best practices, refining the output through discussions with administration, surveys of your officers, and post-occupancy evaluations. The result is a spreadsheet for each internal department showing staff growth over time, workspaces for those staff, and support spaces for each department.

COMMUNITY SUPPORT

BKV Group can help you communicate the importance of a new or replacement police station and rally support in the community in a variety of ways: neighborhood meetings, community charrettes, press releases, project websites, and direct mailings, for instance. By using line-drawings, renderings, Virtual Reality goggles, spreadsheets, charts, etc., a clear presentation of the local, regional, and global benefits can be made, clearing the way for approvals, zoning changes, or public funding.

WWW.BKVGROUP.COM

100+
POLICE STATIONS
COMPLETED NATIONWIDE

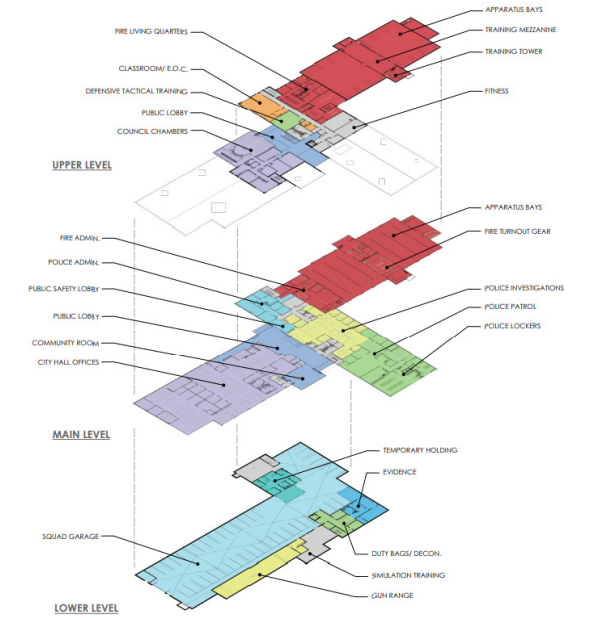
198
TOTAL DESIGN
AWARDS

300+
GOVERNMENT
PROJECTS NATIONWIDE

POLICE STATION PLANNING & FEASIBILITY

BKV Group is a recognized leader in the planning and design of law enforcement facilities. A needs assessment study that includes an operational and physical analysis of the facility is the foundation of telling the story to your constituents of whether a remodeling, new addition, or a new facility is required. As a full-service firm with architecture and engineering in-house, our experienced team documents the operational and physical deficiencies of your facility demonstrating the need and requirements of the project.

Facility planning follows the needs assessment and through space programming and preliminary concept design, the spaces, adjacencies, flows, and overall image of the facility along with an estimated construction budget and construction implementation plans.





Watch the Chief of Police give the, "New Detroit Lakes Police Station Tour." BKV Group is proud to serve those who serve us.

Our Public Safety, Police and Fire Departments, we all do things so differently. [BKV Group] did a nice job of listening to us and laying out the buildings that work for our process, for Fridley. We didn't want to come into the building and start making capital improvements in 3 years. We wanted to live in this and get it right for 50 years and be proud of it and I think we got that done.

BRIAN WEIERKE

*Director of Public Safety, Police Chief of Fridley
City of Fridley
Fridley Public Safety Campus*

Bruce Schwartzman has been very responsive to our goals and objectives, well prepared to assist in the approval process of the project and exceptional in meeting project deadlines. We placed the BKV Group under a very aggressive timeline and they meet or exceeded our timeline constraints with thoroughness and quality outcomes.

PAUL HOPPE

*Public Safety Director
Wyoming Public Safety Department
facility evaluation and needs assessment for a remodel and expansion of a Public Safety Building*

This [facility] makes a huge difference in the day-to-day workings of every person who works for the Police Department...We are so grateful for this and it means so much to us.

STEVE TODD

*Detroit Lakes Police Chief
Detroit Lakes Police Department*

We're just really proud of [the facility] and we're on time and we're under budget.

BRETT MASON

*Le Sueur County Sheriff
Le Sueur County Justice Center
Published in The Mankato Free Press*

CHICAGO

209 South LaSalle Street
The Rookery, Suite 920
Chicago, IL 60604

P 312.279.0470

DALLAS

1412 Main Street
Adolphus Tower, Suite 700
Dallas, TX 75202

P 469.405.1196

MINNEAPOLIS

222 North Second Street
Long & Kees Building, Suite 101
Minneapolis, MN 55401

P 612.339.3752

WASHINGTON, DC

1054 31st Street NW
Canal Square, Suite 410
Washington, DC 20007

P 202.595.3173