

DENSITY GUIDE



BKV
GROUP

3-STORY GARDEN STYLE WALK-UP

80 units per acre

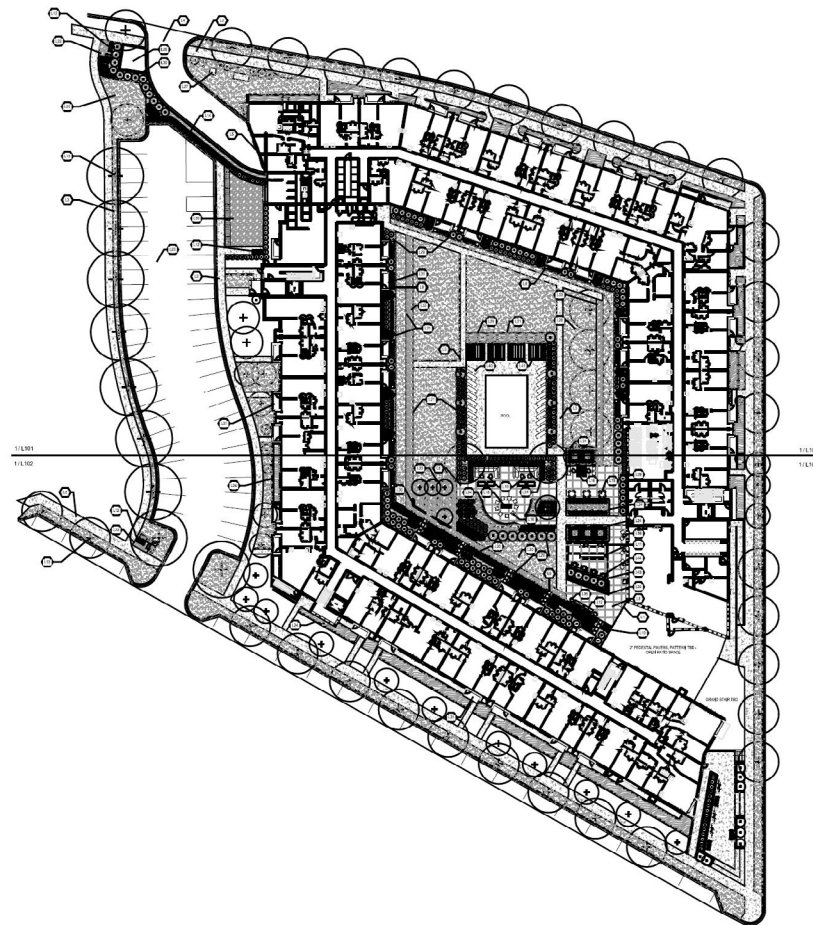
A three-story structure typically with ample parking on-site.



4-STORY APARTMENT

120 units per acre

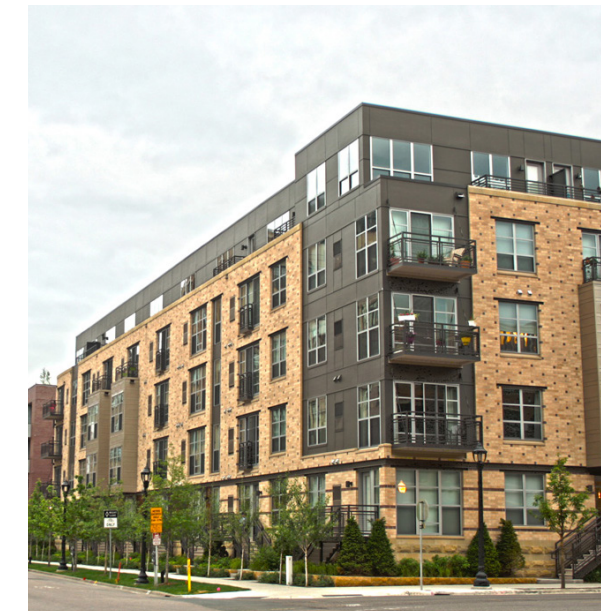
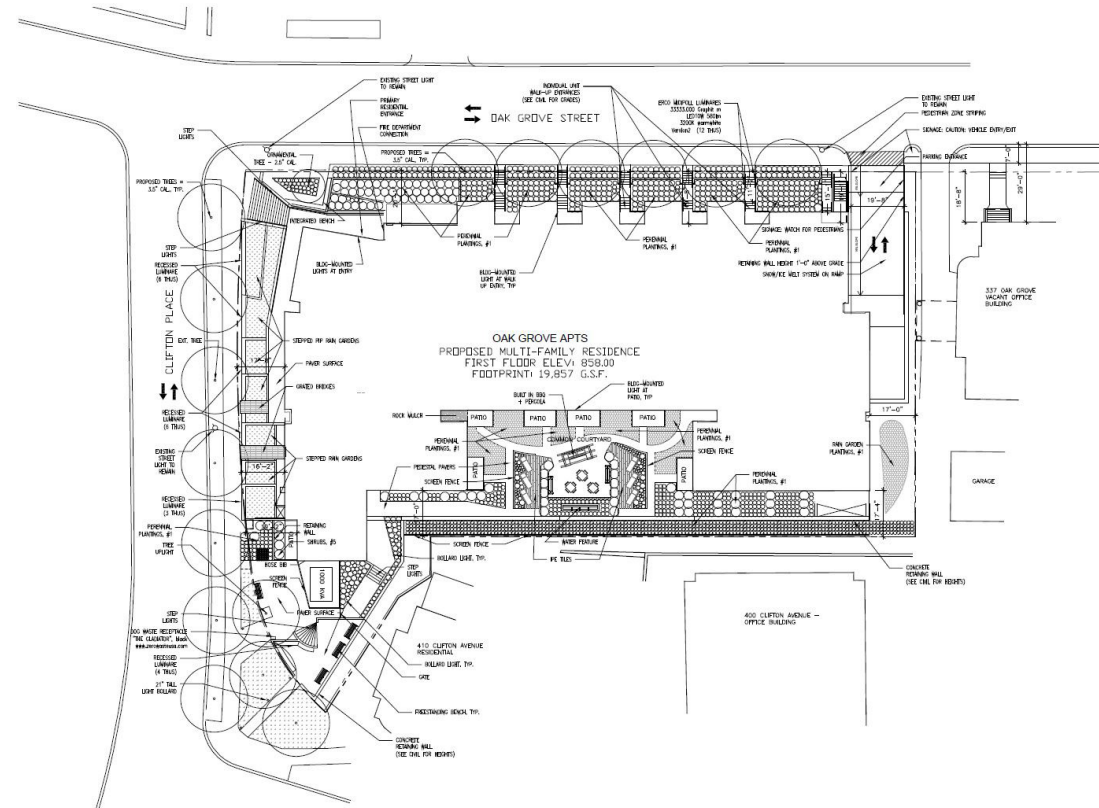
A four story structure placing residences on top of a garage podium, efficiently using the site up to the maximum height for wood construction.



5-STORY APARTMENT

150 units per acre

A five story – or mid-rise – housing option best suited for urban or transit sites, featuring seven to eight stories of above and/or below-grade parking.



PODIUM STICK-FRAME (UP TO 85 FEET)

175 units per acre

Comprised of multiple stories of light-frame wood construction over one, typically boosting the number of stories you can build. Podium also usually comprises one-story above grade, with two or more parking levels below grade, offering opportunities to maximize the value of a project.



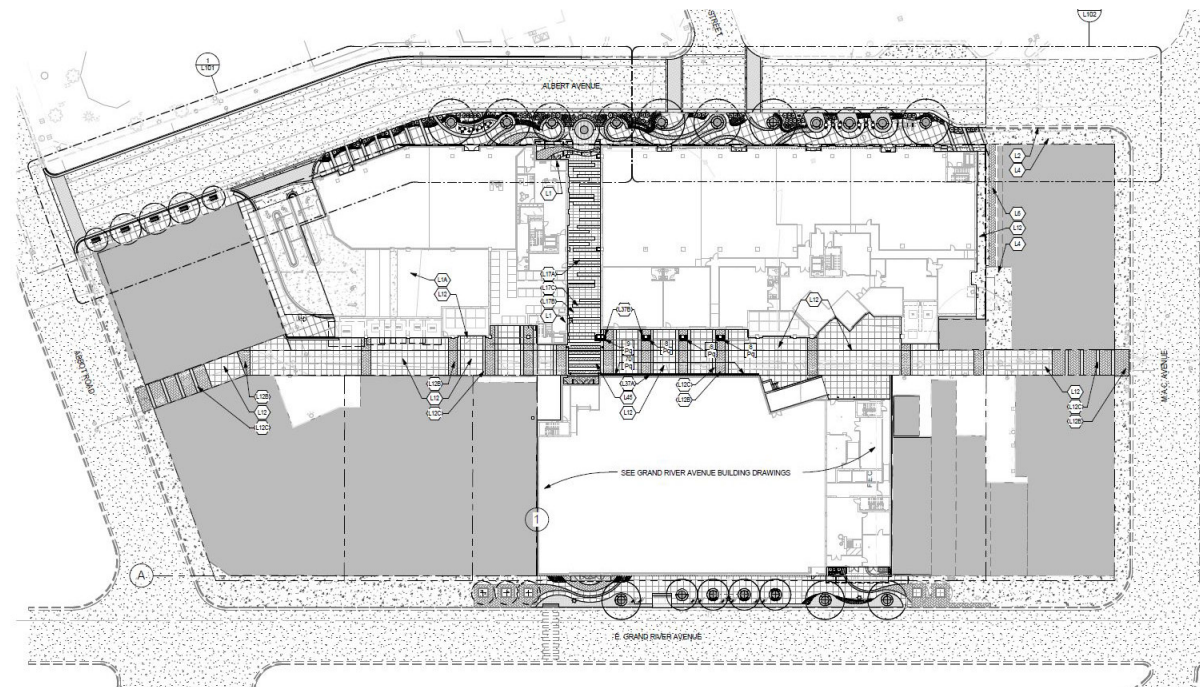


LIGHT GAUGE

(UP TO 180 FEET)

400 units per acre

BKV Group's well-honed light gauge steel construction process yields high levels of constructability and proficiency. The construction type provides 50% more density, features lower (or reduced) construction costs, and yields a 20% reduction in the construction timeline.



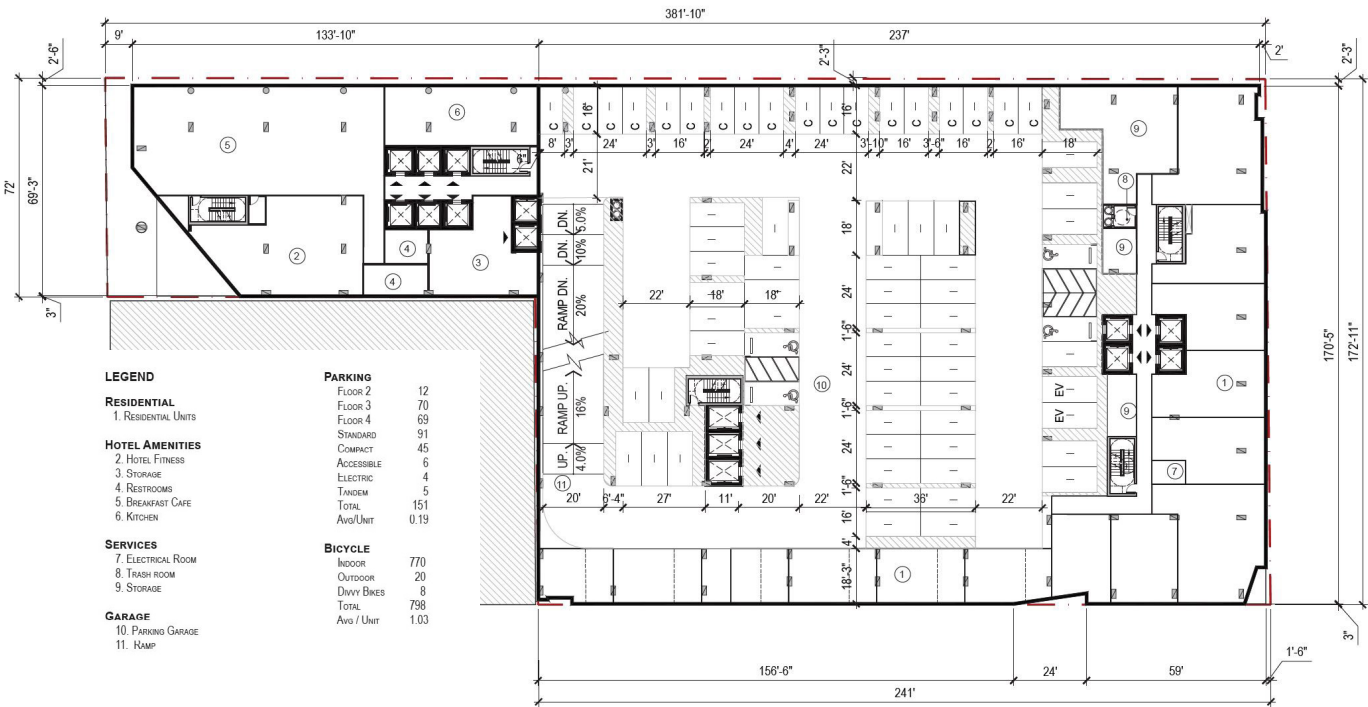


HIGH-RISE

(180 FEET AND UP)

800 units per acre

High-rise housing is ideal for dense, urban locations, typically coming with higher construction costs, but yielding the biggest returns in terms of units per acre.



TO VIEW OUR WORK AND TO CONNECT WITH OUR EXPERTS
PLEASE VISIT:

WWW.BKVGROUP.COM



CHICAGO

209 South LaSalle Street
The Rookery, Suite 920
Chicago, IL 60604
P 312.279.0470

DALLAS

1412 Main Street
Adolphus Tower, Suite 700
Dallas, TX 75202
P 469.405.1196

HANOI, VIETNAM

No 1 Dao Duy Anh Street
Ocean Park Building,
Suite 15, Room 1508
Phuong Mai Ward,
Dong Da District
Hanoi, Vietnam
P 469.405.1240

MINNEAPOLIS

222 North Second Street
Long & Kees Building, Suite 101
Minneapolis, MN 55401
P 612.339.3752

WASHINGTON, DC

1054 31st Street NW
Canal Square, Suite 410
Washington, DC 20007
P 202.595.3173