

DETENTION FACILITIES

GUIDING PRINCIPLES

BKV Group has developed a detailed planning and design process to make sure our clients are involved and that their questions and requirements are addressed in the process and reflected in the drawings and the final design. In doing this we have established our guiding principles.

COLLABORATION

The projects are more successful when we are all working together on a common cause.

COMMITMENT

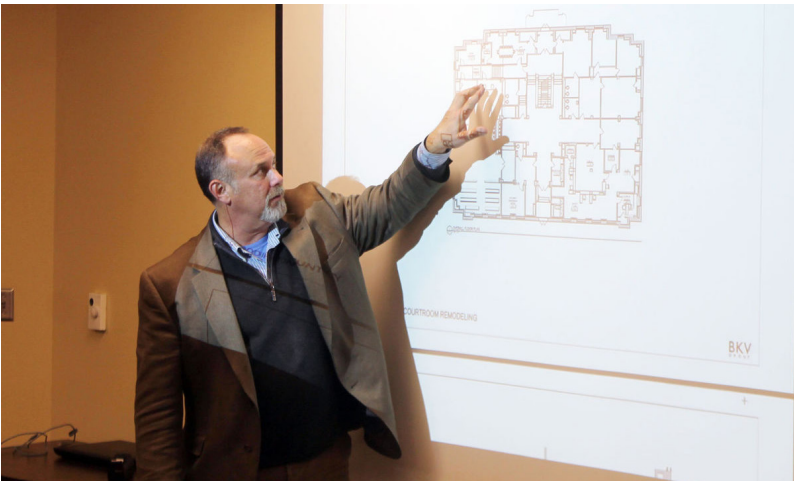
Our focus in providing timely professional services from start to finish.

EXPERTISE

Combining our years of project experience with new and ever changing technology and planning issues, to make us better and our clients projects a long term success.

RESPONSIBLE

Taking ownership of all aspects of the project, schedule, and quality while designing within budget.



OUR TEAM OF EXPERTS



BRUCE SCHWARTZMAN, AIA

PARTNER-IN-CHARGE

Bruce Schwartzman leads BKV Group's National Government Practice. He has more than 39 years overall experience with the last 28 years focused on justice architecture. He has extensive experience having designed or managed more than 100 justice projects including 15 courthouses, 44 detention centers, and 15 law enforcement centers. He is an award-winning architect and talented communicator who understands and exceeds clients expectations through his overall leadership of the project, scheduling and cost control. As a public safety planner, Bruce maintains a continual understanding of current trends and techniques associated with these types of facilities, assisting the client and design team to bring the best solutions to the table

40

YEARS FOCUS
ON JUSTICE
ARCHITECTURE

100

JUSTICE / LAW
ENFORCEMENT
PROJECTS



HENRY PITTNER, AIA

SENIOR DETENTION PLANNER

Mr. Pittner has gained national recognition for his leadership managing and planning justice facilities throughout the country. He is an award-winning architect and leader in applying research to the detention environment. His planning focus is on rehabilitation and restoration, using national best practices while taking a multi-discipline approach to creating therapeutic spaces and calm environments focusing on mind, body and social health creating safe, secure and appropriate facilities.

36

YEARS FOCUS
ON JUSTICE
ARCHITECTURE

72

JUSTICE / LAW
ENFORCEMENT
PROJECTS



DUWAYNE JONES, AIA

PROJECT MANAGER / DETENTION ARCHITECT

DuWayne is a Detention Architect who focuses on lasting and efficient public sector architecture. With more than 24 years of experience working on county and state detention projects, he is experienced with the detailed development of planning options for detention, sheriff's offices and 9-1-1 communication centers. He pays attention to detail and is committed to developing design concepts into construction documents that deliver effective design solutions on time and on budget.

28

YEARS FOCUS
ON JUSTICE
ARCHITECTURE

65

JUSTICE / LAW
ENFORCEMENT
PROJECTS



ANTHONY ENRIGHT, ASSOCIATE AIA

PROJECT MANAGER / DETENTION ARCHITECT

Anthony is a Designer and Planner who focuses on the practical implementation of design plans and coordination of construction projects. He has worked as a Planner and Designer on projects at a variety of scales, from very large multi-site projects to small scale renovations. Anthony has worked with various municipalities throughout the region and knows the importance of producing design solutions that address the unique issues facing public sector projects. He has worked on numerous jail and detention projects and is experienced with the detailed development of planning options for justice and governmental facilities. Anthony's attention to detail and commitment to delivering effective design solutions on time and on budget make him an asset to our team.

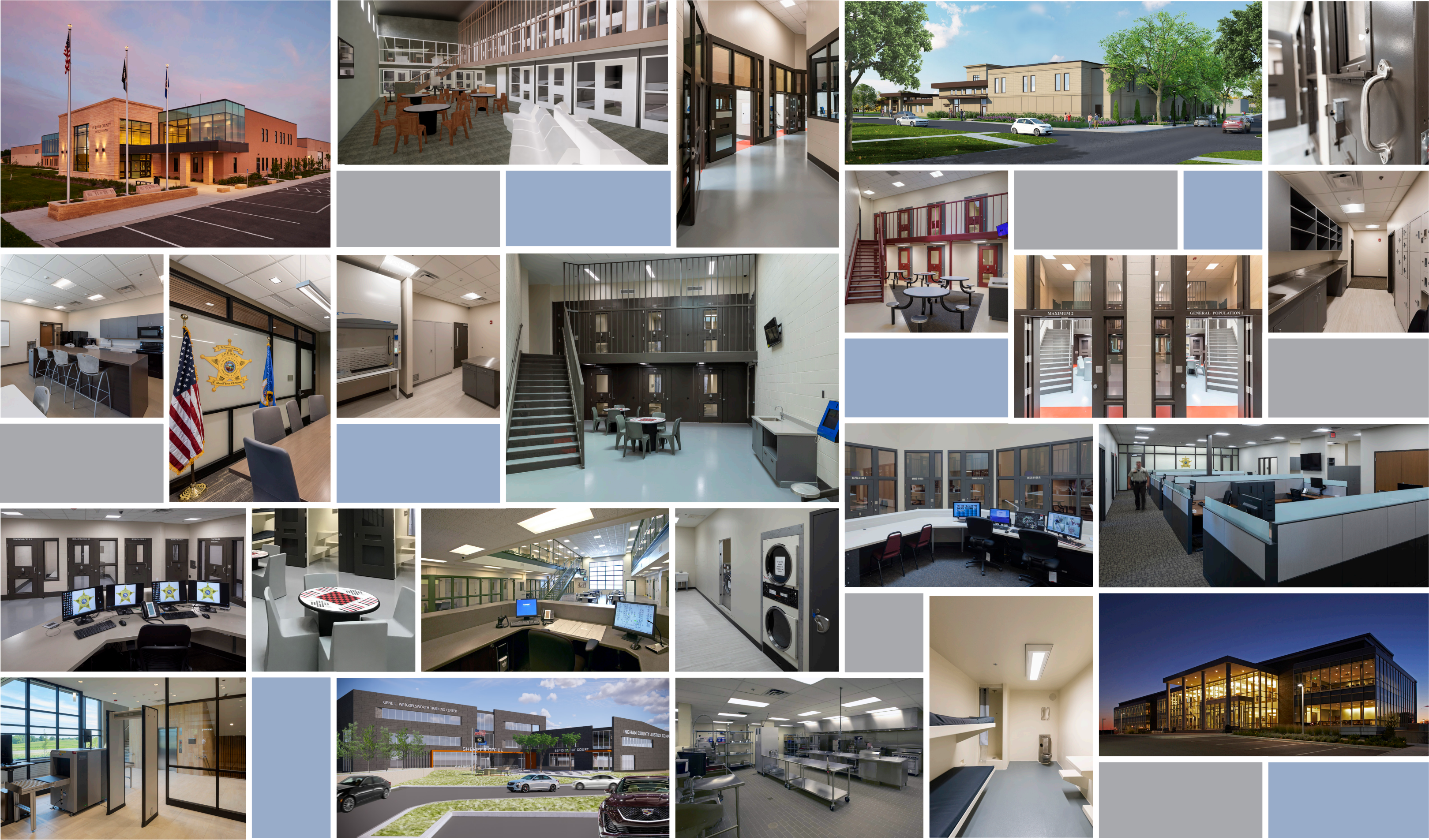
19

YEARS FOCUS
ON JUSTICE
ARCHITECTURE

46

JUSTICE / LAW
ENFORCEMENT
PROJECTS

OUR WORK



DESIGN CONSIDERATIONS



BKV Group has assembled a highly experienced and skilled group of Architects, Engineers, Designers and Planning professionals who have spent the majority of their careers working in justice architecture with a special focus on jail design. Our staff has experience with detention work Regionally, Nationally and Internationally including dozens of jail projects in the upper Midwest region. Together our experience adds up to thousands of constructed jail beds.

Not content to provide status-quo jail solutions, many of our projects represent innovative design that helps solve each client's individual needs. With all jail designs across many diverse jurisdictions, some key considerations are always necessary. Experienced jail designers will assist with weighing the various choices that fall within these categories with the cost and what design best represents your values. These key considerations include:

- Durability and Longevity
- Staffing and Operational Efficiencies
- Safety and Security
- Department of Corrections / ACA Standards
- Cost & Constructability
- Future Expansion

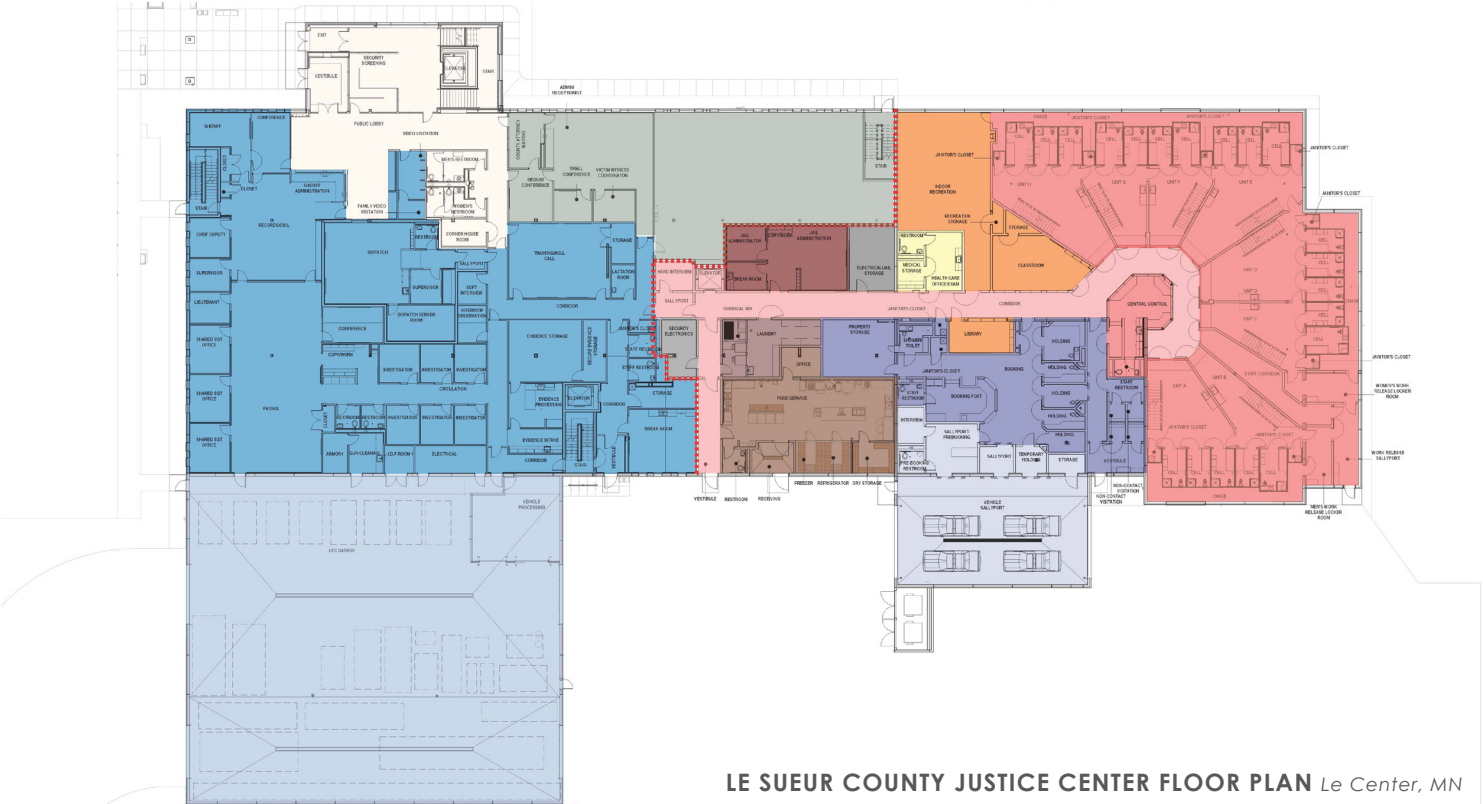
Additional considerations developing in detention design that we believe our team can bring a unique perspective to include:

BIOPHILIC DESIGN

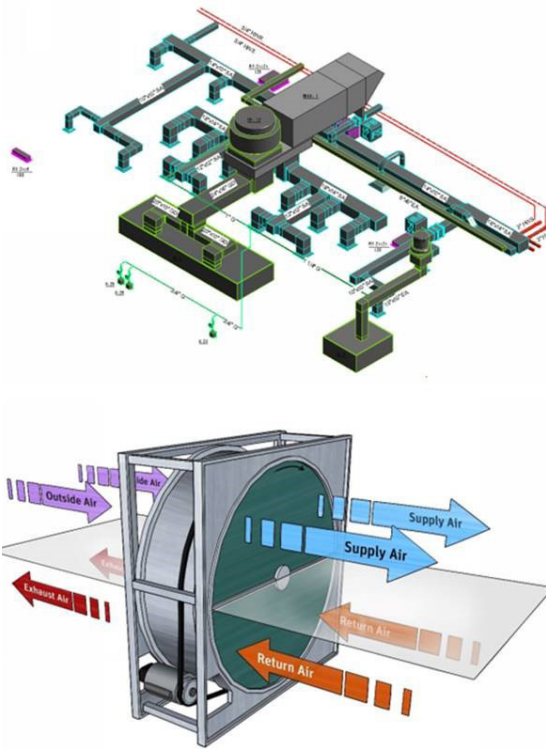
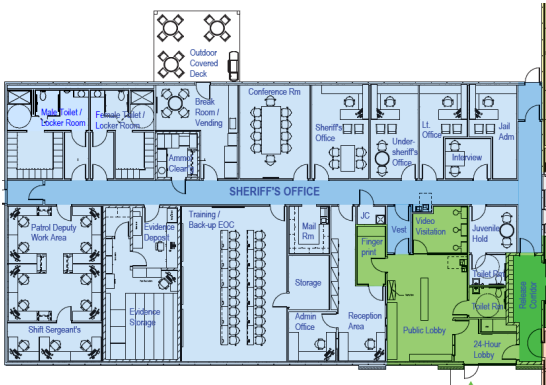
BKV Group believes that the human-nature relationship and human health are essential in the correctional environment for the overall wellbeing of jail staff and the residents in their custody. With a design focus on rehabilitation and restoration, we take a multi-discipline approach to creating therapeutic spaces and calm environments focusing on mind, body and social health using national best practices. Our designs use biophilic design principles that provide access to natural light and fresh air, views to the landscape, and use of color and materials. Biophilic design is cost effective to construct and maintain and helps keep inmates and staff safe and secure.

IMPROVEMENT OF INFECTION CONTROL

- Standard mechanical ventilation systems for heating and cooling supply air from the ceiling at high speeds 'mixing' the air supply as rapidly as possible to provide uniform temperatures. The mixing of air supply causes turbulent flows that can mix and spread contaminant droplets and aerosols
- Displacement Ventilation System supplies air from just above the floor level at low speeds reducing the amount of mixing air and with the returns up in the ceiling, the contaminants are drawn upward away from the occupied zone.
- Acoustically quiet system that provides the highest ventilation efficiency for energy savings, improved air quality, and temperature gradients between the floor and ceiling making the space comfortable(heat rises)
- Suitable for larger and taller spaces like dayrooms, recreation and program spaces



LE SUEUR COUNTY JUSTICE CENTER FLOOR PLAN Le Center, MN



ALPENA COUNTY JAIL 3D WALKTHROUGH VIEW Alpena, MI



BKV has formed an excellent partnership with Freeborn County... While numerous changes in plans occurred during construction, changes were accommodated allowing us to meet our deadline. BKV's integrity has been paramount...I recommend their services and am thankful that Freeborn County was able to select and work with these justice center professionals.

MARK HARIG

Freeborn County Sheriff

Freeborn County Government Center



The services provided by BKV Group balanced high quality design, technical proficiency, a sensitivity to our community, all within a budget performance to meet our expectations. Pine County is proud of the Government Center designed by BKV Group.



I think they will be surprised when they get to see [the jail]. It really is impressive, and we're all excited to get it done and get moved in.

STEVE KIELISZEWSKI

Alpena County Sheriff

Alpena County Jail

Published in The Alpena News



We're just really proud of [the facility] and we're on time and we're under budget.

JOHN STIEBEN

Former Pine County Coordinator

Pine County Justice Center

BRETT MASON

Le Sueur County Sheriff

Le Sueur County Justice Center

Published in The Mankato Free Press

CHICAGO

209 South LaSalle Street
The Rookery, Suite 920
Chicago, IL 60604

P 312.279.0470

DALLAS

1412 Main Street
Adolphus Tower, Suite 700
Dallas, TX 75202

P 469.405.1196

MINNEAPOLIS

222 North Second Street
Long & Kees Building, Suite 101
Minneapolis, MN 55401

P 612.339.3752

WASHINGTON, DC

1054 31st Street NW
Canal Square, Suite 410
Washington, DC 20007

P 202.595.3173